




100% ELECTRIC ADVENTURE





‘THE REAL APPEAL OF THE BOAT IS  
THAT IT CAN GO UP TO 35 KNOTS  
AND ACCELERATE RAPIDLY -  
ALL WHILE CREATING NO EMISSIONS’

**FORBES**



‘ELEGANTLY AND  
BEAUTIFULLY VISIBLE  
IN THE CLEAR,  
MINIMALIST DESIGN’  
**GERMAN DESIGN AWARD 2020**







WE ARE THE BEST AT WHAT WE DO



SUSTAINABILITY

Electric power produces a minimal carbon footprint compared to fossil fuels, which helps combat climate change. Toxic fumes and disruptive noises vanish with electrical power. You are free to focus on more important things such as nature surrounding you as your craft quietly glides through the water. We strive to use the most environmentally friendly material such as cork, flax fibres, reused PET and recycled textiles.



DESIGN

X Shore combines software and hardware – practical, smart, and beautifully designed to blend in with nature. The Scandinavian clean and minimalist design has its focus on the user and activity. The wide open stern, the modular platform and the center console maximize the experience, regardless of whether you chose to dive, fish, water ski och hang out with friends and family on the various sofa group combinations.



TECHNOLOGY

Outstanding acceleration and speed, in combination with distance traveled, is critical for a modern lifestyle on the water. In testing, X Shore boats are optimised for speeds between 5 and 35 knots, and a total distance of 100 NM can be covered at lower speeds. While in operation the X Shore-technology collects an impressive 150 data points per second, providing the user with accurate real-time performance data.



## X SHORE

X Shore's headquarters is in the heart of Stockholm, Sweden. Our primary mission is to manufacture high-performance electric boats and contribute to solving the climate crisis by being an as good – or better – alternative to boats with combustion engines.

All team members, from engineers and mechanics to management, work tirelessly to create the best possible experience at sea while forming a strong bond with, and a promise to protect, nature.

We strive to build X Shore boats to allow for both social sunny days with friends and family, as well as for adventure – enabling you to explore your world in complete freedom and enjoyment, on your terms, and becoming one with nature.







## THE POWER OF SILENCE

X Shore's design is distinctively Scandinavian with clean, minimalist lines. Our inspiration comes from the South American Electric Eel, a creature defined by strength and grace.

We modeled our boats after the eel's robust head and its sleek, streamlined body. Creating the safety of a solid bow, and the silence of a dynamic, powerful vessel, run entirely on electric energy.

We see nature's design as beauty and perfection, something to be emulated. On the bow, our Ornament, "The Power of Silence," a sculpture of the South American Eel, drawn by cult tattoo artist William Pacheco and sculptured by Johan Ferner Ström. It pays tribute to our inspiration and serves as a handle for safe and effortless boarding.

In time, the hull and Ornament develop an equilibrium with their environment, taking on the green hues of the ocean through contact with saltwater.

While every X Shore is built with the utmost care and passion and is equipped with the same robust materials and fittings, no two vessels will look alike. Defined by experience, colored, and time tested by the different tides, every craft is a reflection of its pilot, a chosen course, of stories and memories.



## BEING ONE WITH NATURE

Operating an X Shore craft allows you to explore the oceans, lakes, rivers and nature without the harmful noise and fumes a fossil-fuel engine emits. Knowing that you are connecting to and blending in with your surroundings while traveling in time, without harming the environment, installs a great sense of liberty and harmony. You have become one with nature.

### OUR AIM

We believe in change, and that it's possible for an industry that has remained firmly rooted in its traditions, to evolve and steadily adapt to support a cleaner environment. While embracing the culture of maritime craftsmanship, innovative research, and the development of new technology, combined with a sharp design, durable, and sustainable materials, allows X Shore to pioneer this change.

### OUR PURSUIT

X Shore was born on the Swedish coast, where people and the sea have lived in harmony for centuries. Combining our new technology with traditional maritime craftsmanship, X Shore strives to bring sustainability and innovation to the marine industry. Our goal is to elevate your seafaring experience to a new level while protecting Mother Nature.

### OUR HIGHER PURPOSE

We strive to help reverse climate change by raising awareness of the severity of the pollution of our oceans, and by developing the technology and design to create 100% electrically powered boats, and encouraging the marine industry to embrace this change.



# ALL WEATHER WELCOME!



At X Shore, we don't just show you fair weather photos. Let's face it, the reality is quite different, and that especially holds for the Nordic regions where the weather and the seas can be pretty rough! High winds, heavy rain, waves and swells can be met, no matter where you are at sea. Designed and made in Sweden, we have put our boats to the test time and again in the rough Swedish waters. We are proud to say that our craft weather the storms.



IF YOU ENJOY BEING IN NATURE AND ON THE WATER, YOU WILL FALL IN LOVE WITH YOUR X SHORE!

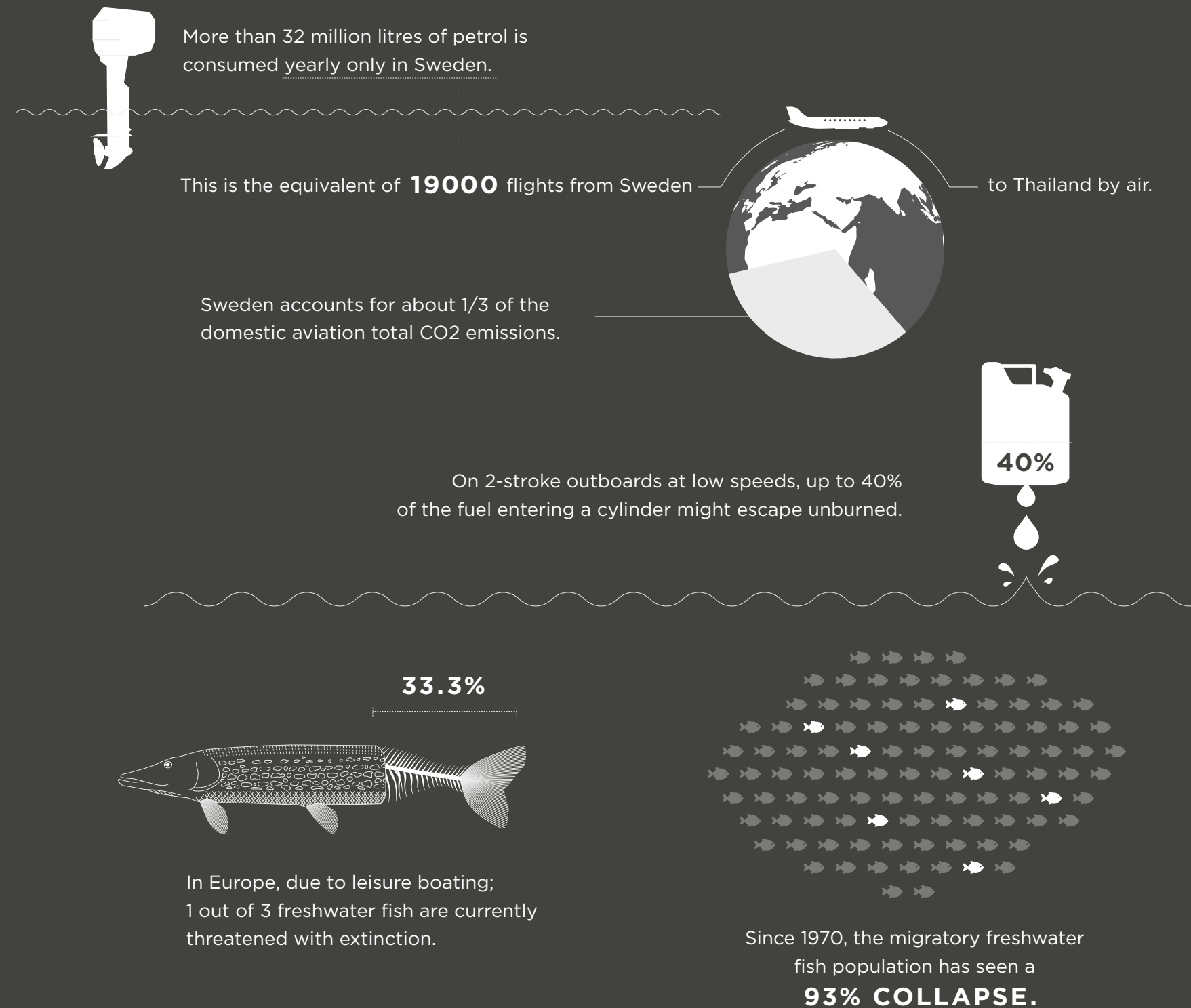
BOATING WITH X SHORE IS A GAME-CHANGER.

Imagine owning a boat where you don't have to think about the ongoing cost of expensive fuel; you're not breathing in fumes, far less swimming in, or even swallowing petrol leakage or engine oil when taking a dip in the ocean. Think about how pleasant it would be not to have engine failures or time-consuming, costly repairs and yearly maintenance charges.

We know the expense and frustration of owning a fossil-fuel-powered speedboat can add up to the point of you throwing in your captain's hat and walking away!

Not with X Shore. Our boats are smart, easy to maneuver, user-friendly, and above all, clean! Enjoying being at sea, silently gliding through the water, without leaving a carbon footprint, is a sensational experience leaving you with a relaxed and peaceful mind.

Here are a few facts that will have you scratching your head:







## THE TEAM

X Shore's Team comprises a group of individuals from varying backgrounds, cultures, and countries that share a single vision - to save the oceans by forcing change on an old, traditionally immovable industry.

We pride ourselves that the majority of our crew members are engineers, working fulltime on our boat research and development program, optimizing performance, efficiency, sustainability and usability.

Compare that to a traditional boat manufacturer where one might find two engineers, with the rest of the company being in sales and marketing or customer service.

At X Shore, we mean business, and we are committed to our mission. We are a high-tech company aiming to make a significant positive impact on our environment.



## ADVENTURE

X Shore isn't just a boat - X Shore is a boundless adventure vehicle. If you can think about it, your X Shore can do it!

Traditional speedboats are primarily just that, speedboats. X Shore is a multi-functional high-tech boat that can be used for and adapted to pretty much any adventure and activity.

The modular interior layout system lets you set the tone. One day you may want to have a fishing boat and the next day you may want to go diving or hit the adrenaline by converting your craft into a wakeboard/water-ski boat. How about silently cruising watching the wild-life, followed by a romantic candle-lit dinner? You can convert your X Shore to what you want it to be.





'X SHORE, LA BARCA ELETTRICA CHE  
VUOLE DIVENTARE LA TESLA DEL MARE'

WIRED

## WATERSPORTS

Watersports are thrilling because being on the water at high-speed lends a great sense of freedom. Playing your favorite sport behind an X Shore boat, without fumes, petrol and oil spillage, and without noise pollution, elevates the experience to a whole new level!

It's liberating to see, feel, and hear how your watersports are enhanced and become environmentally friendly.





## TAKE THE PLUNGE

Take your X Shore on a diving or snorkeling trip and spend only a fraction of the cost of the energy you would with a conventional boat. Knowing you are not harming the environment. Submerging into the water in peace and harmony. That's being one with nature.



## PLEASURE BOATING

Your X Shore is your private island. Whether you are drifting and daydreaming alone or hosting a lunch party, X Shore allows you to adjust to and create your desired scene.





‘EXPERIMENTATION IS KEY TO FINDING MAGIC’

THRIVE GLOBAL







## SO MUCH MORE THAN A BOAT

X Shore isn't just made for adventure. Let your creative juices flow - there's nowhere more inspiring than aboard your X Shore.

Bring your laptop, start writing that book you always wanted to, or grab an instrument and play. Draw, paint, sing, meditate, yoga, the possibilities are endless.

Follow your heart and passions with X Shore, being at one with nature, and enhancing your creativity.



‘LE BATEAU SE FOND DANS LA NATURE’

LE FIGARO







## CUSTOMIZE THE X SHORE TO FIT YOUR DAY

X Shore boats are adaptable to most situations. With our functional switch and fit modular interior system on intergrated rails, you can change the layout within minutes to suit your day.

Go from entertaining a lunch party to a recreational-relaxation setting, or load your mountain bikes and kayaks on the solid carbonfiber roof, fitted with roof racks. Next, switch it again and bring along your dive tanks. Endless possibilities offering endless joy!





MODULAR INTERIOR





MODULAR INTERIOR





**100% Electric.**

**XSHORE**  
**EELEX 8000**

MODULAR INTERIOR





‘THIS HIGH-DESIGN ELECTRIC YACHT  
AIMS TO CHANGE BOATING FOREVER’  
ARCHITECTURAL DIGEST





01

02

03

04

06

05

- 01 EELEX 8000 ICONIC FUNCTIONAL DESIGN
- 02 GLASS FIBRE REINFORCED PLASTIC SANDWICH
- 03 ROOF RACK
- 04 CARBON SANDWICH ROOF
- 05 CONSOLE
- 06 EASY-ACCESS SWIM PLATFORM





07

07 "POWER OF SILENCE" ORNAMENT  
FOR A SAFE WELCOME ABOARD

08 LANTERN

09 FLAT BOW FOR EASY DOCKING

10 INTERGRATED FAIRLEAD WITH CHAFE  
PROTECTION FOR CLEAN ROPE  
DOCKING

08

10

09

XS SHORE





- 11 SPACIOUS BOW
- 12 SMART CORK FREEBOARD FOR SEATING AND QUICK MOUNT ACCESSORIES
- 13 ANTI SLIP CORKDECK
- 14 HIGH FLAT BOW FOR EASY DOCK ENTRY
- 15 STAINLESS STEEL LOOP
- 16 STAINLESS STEEL ANCHOR BOX SELF DRAINAGE





19

17

18

- 17 ANCHOR AND ROPE STORAGE
- 18 STAINLESS STEEL ANCHOR
- 19 STAINLESS STEEL HATCH QUICKLOCK



20 SYMMETRICAL STEPS FOR  
SAFE ENTRANCE AND  
SEATING

21 STORAGE

22 STAINLESS STEEL QUICK  
LOCK

23 GLASS FIBRE REINFORCED  
PLASTIC SANDWICH



21

20

22

23





24

24

25

27

26

28

29

30

31

- 24 SPEAKERS AS A STANDARD
- 25 WIDE LEDGE FOR SEATING
- 26 USB PORT
- 27 24" TOUCH SCREEN
- 28 BOW THRUSTER CONTROLS
- 29 INTERCEPTOR CONTROLS
- 30 THROTTLE
- 31 PICNIC TABLE WITH INTEGRATED STORAGE



- 32 SMART PICNIC TABLE WITH THREE STORAGE COMPARTMENTS
- 33 WATERTIGHT BOX FOR PERSONAL ITEMS STORAGE
- 34 SPACIOUS CHILLBOX
- 35 WASTE BOX





**CONSOLE**

Utilizing our Internet of Things solution, you can securely start your boat with our compatible Garmin MARQ Captain watch. Get updates and information about your boat during the whole trip through through our app. The app also allows you to stay up to date with your Eelex 8000 while on shore by sending notifications regarding the charging status.



37

36

38

- 36 ICONIC XS LOGO
- 37 CONTROL BUTTONS
- 38 STEERING WHEEL





39

40

41

42

- 39 24" GARMIN TOUCH SCREEN
- 40 USER FRIENDLY ALL IN ONE SOFTWARE
- 41 GARMIN CAPTAINS WATCH
- 42 INTEGRATED USER EXPERIENCE





### WATCH OUT

Utilizing our Internet of Things solution, you can securely start your boat with our compatible Garmin MARQ Captain watch.

There is a man overboard sensor built-in for additional safety. When the watch is more than ten meters away or in water the boat will stop within ten seconds. Our Watch app will also send out support information in case any issues occurs.



### STAY CONNECTED

Stay in sync with your Eelex 8000 from anywhere. Our exclusive app enables you to keep connected to your boat from wherever you are. Features include real-time battery level updates, a countdown to fully charged status, available range, battery temperature, and multiple usage stats.





43

43 5.9 METERS ALUMINIUM  
RAILS TO LOCK MODULAR  
INTERIOR TO THE DECK





44

45

46

- 44 INTERGRATED FAIRLEAD WITH CHAFE PROTECTION
- 45 STAINLESS STEEL CLEAT
- 46 CORK GUNWALE





47

47 SLIDE IN SWIM  
PLATFORM LADDER





- 48 ICONIC FUNCTIONAL DESIGN STERN
- 49 EASY-ACCESS SWIM PLATFORM
- 50 SELF DRAINING
- 51 KELSON DRAIN

Electric.



X SHORE  
EELEX 8000





## CHARGING

Juice Booster, our charger of choice and winner of the German Design Award 2020, provides the smallest and safest mobile 22 kW charging station. Fully charged in 3-4 hours in ideal conditions. Our chargers are waterproof, highly resistant, and suitable for use in -25 to +45 degree weather.

### SUPERCHARGING

DC FAST CHARGE 100KW 20-80%: 40MIN

DC FAST CHARGE 55KW 20-80%: 1,2H

DC FAST CHARGE 100KW 0-100%: 1H 20MIN

DC FAST CHARGE 55KW 0-100%: 2,5H

### CHARGING 20-80%

3-PHASE 32A: 3H

3-PHASE 16A: 6H

1-PHASE 16A: 17,5H

### CHARGING 0-100%

3-PHASE 32A: 6H

3-PHASE 16A: 12H

1-PHASE 16A: 36H





53

54

52

52 120 KWH LIQUID COOLED  
IP 67 LITHIUM ION BATTERIES  
(2 X 60KWH)

53 SWIM LADDER HANDLES

54 ALUMINIUM RAILS FOR  
MODULAR INTERIOR



- 55 AQUADRIVE WITH VIBRATION REDUCTION SYSTEM AND WATER LUBRICATION
- 56 POWER ELECTRONICS BOX
- 57 220 kW HYBRID SYNCHRONOUS MOTOR
- 58 2 x 12V BATTERIES
- 59 COOLING SYSTEM FOR BATTERIES, MOTOR, DC-DC, INVERTER, HV CHARGER

56

57

58

59

55

39





60 WATER COOLING SYSTEM

61 WATER HEATING SYSTEM

60

61







'THE FULLY ELECTRIC MOTOR IS  
ALMOST COMPLETELY SILENT AND LEAVES  
NO POLLUTION IN ITS WAKE'  
IF DESIGN AWARD

## SUSTAINABILITY



At X Shore we focus on designing and producing sustainable electrically powered luxury speedboats, respecting nature while promoting a clean environment, and restoring ecological harmony to the oceans.

Electric power produces a minimal carbon footprint compared to fossil fuels, which helps combat climate change. Toxic fumes and disruptive noises vanish with electrical power.



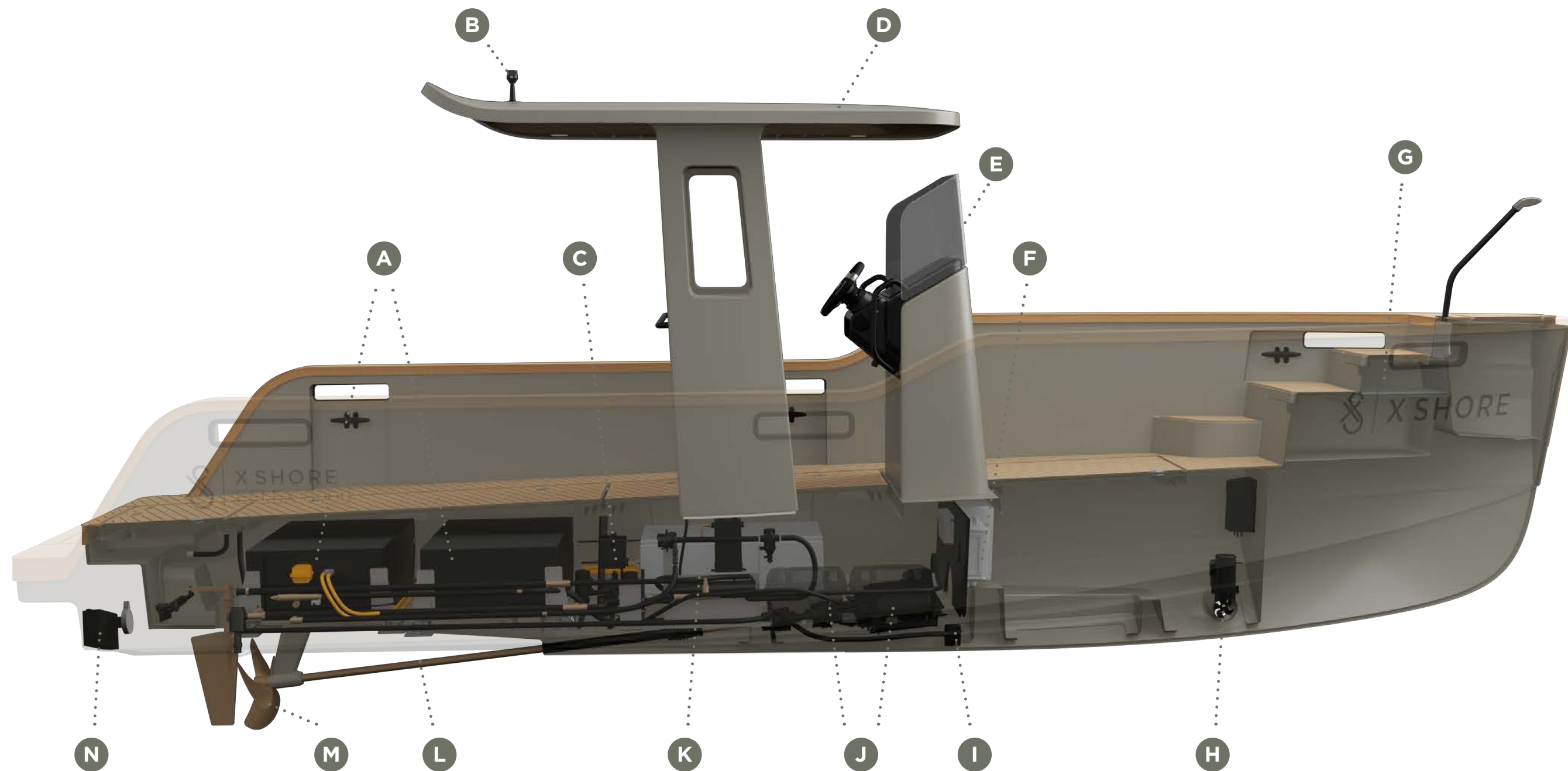
## SUSTAINABLE CORK

We use highly durable cork wherever we can, as it's a highly sustainable and practical material that regrows after harvest. As opposed to wood, the cork tree does not get cut down to obtain cork. Farmers strip the bark from the trees to remove the cork, which grows back. The trees continue to live and grow.

We use cork for our deck, steps, swim platform, flat bow, and freeboard. Besides being a sustainable material, cork is slip-resistant, reduces noise, warms when exposed to cold, wet weather, and cools when in the hot sunlight.







## STATE OF THE ART TECHNOLOGY

**A POWERBANK**  
120 KW H LITHIUM-ION  
BATTERIES

**B NAVIGATION LIGHT**  
HIGH VISIBILITY IN  
DARKNESS

**C COOLING SYSTEM**  
COOLING SYSTEM ALSO  
USED FOR ONBOARD  
HV CHARGER

**D ROOF**  
100% CARBON FIBRE  
ROOF

**E CONSOLE**  
FULLY DIGITAL USER-  
INTERFACE SYNCED  
WITH CONNECTED  
WATCH AND PHONE APP

**F DISTRUBUTION UNIT**  
12V POWER  
DISTRUBUTION UNIT

**G CHARGER**  
JUICE-BOOSTER  
CHARGER

**H BOW THRUSTER**  
EASY 360 MANEUVERING

**I MOTOR**  
HIGH-PERFORMANCE 220  
KW ELECTRIC MOTOR

**J BATTERIES**  
2X12 V BATTERIES

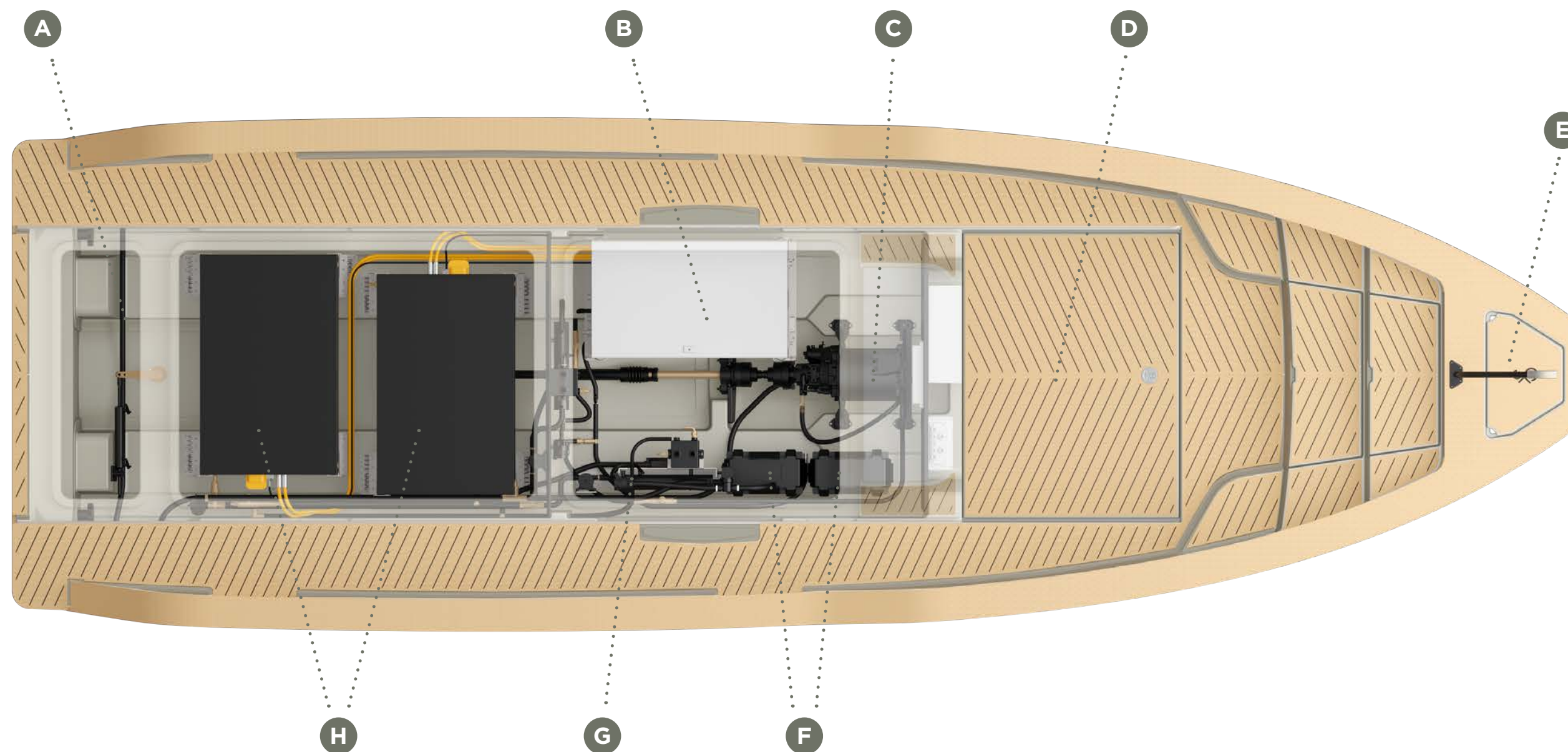
**K POWER ELECTRONICS  
BOX**  
INVERTER  
DC/DC CHARGER  
CHARGER  
PDU

**L 40 MM STAINLESS STEEL  
STRAIGHT SHAFT**

**M 4 BLADE BRONZE  
PROPELLER**

**N INTERCEPTORS**  
FOR FURTHER  
STABILIZATION AND A  
SMOOTH RIDE





- |  |   |
|--|---|
| <b>A</b> HYDRAULIC STEERING              | <b>F</b> 2 x 12V BATTERIES                      |
| <b>B</b> POWER ELCTRONINCS BOX           | <b>G</b> COOLING SYSTEM                         |
| <b>C</b> 220 KW HYBRID SYNCHRONOUS MOTOR | COOLING SYSTEM ALSO USED FOR ONBOARD HV CHARGER |
| <b>D</b> LARGE STORAGE COMPARTMENT       | <b>H</b> 2 x 60 = 120 KWH                       |
| <b>E</b> ANCHOR BOX                      | LIQUID COOLED LITHIUM-ION BATTERIES 400V        |



‘THE COST TO DRIVE AN X SHORE CRAFT  
IS ALMOST 10 TIMES LESS THAN A BOAT WITH  
A TRADITIONAL GASOLINE ENGINE’

ROBB REPORT



SPECIFICATIONS EELEX 8000

LENGTH	8,0 M
WIDTH	2,56 M
WEIGHT	2600 KG
HEIGHT	2,8 M (WATER LEVEL)
DEPTH	0,73 M

BATTERIES

BATTERY SYSTEM	2 KREISEL KBP 60 LITHIUM-ION PACKS NMC 18650 CELLS
ENERGY CONTENT	59 KWH
DISCHARGE POWER	180 KW MAX
CHARGING POWER	33 KW AC MAX
VOLTAGE	370 V
ENERGY DENSITY	207 WH / L 155 WH / KG
COOLING SYSTEM	INTEGRATED PATENTED LIQUID COOLING OPTIMUM TEMPERATURE CONTROL OF THE CELLS WITHIN MINUTES (E.G. HEATING FROM -5°C TO +15°C IN 15 MINUTES POSSIBLE) TEMPERATURE RANGE -20°C TO +50°C
DIMENSIONS (LxWxH)	1.176 X 704 X 370 MM
WEIGHT FOR 2 BATTERY PACK	723 KG

MOTOR DETAILS

SPEED	4'400 RPM
CONTINUOUS TORQUE	270 NM
MAX. TORQUE (MAX. INVERTER CURRENT)	460 NM
CONTINUOUS POWER	145 KW
MAX. POWER	220 KW
MAX. SPEED	12'000 RPM
EFFICIENCY	95%
WEIGHT	76.0 KG
DIMENSIONS	346 X 328 X 292 MM

PROPULSION SYSTEM & PROPELLER

BRUSA HSM1-10.18.22, 400 VDC
GEARBOX WITH REDUCTION 2.842:1
STRAIGHT SHAFT 40 MM
4 BLADED PROPELLER 19X26"

ELECTRIC COMPONENT DETAILS

BRUSA CONTROLLER/INVERTER DMC544: 200 KW, 600 A
GARMIN 24" NAVIGATION AND INFOTAINMENT SYSTEM
HYDRAULIC STEERING WITH GARMIN AUTOPILOT
BRUSA CHARGER NLG664: 400 VAC, 400 VDC, 22 KW





‘SUPERCHARGING MODE’

BUSINESS INSIDER

READY FOR A SPIN?

EXPERIENCE THE POWER OF SILENCE  
AND TEST YOUR X SHORE

BOOK YOUR ELECTRIC ADVENTURE ONLINE AT  
[WWW.XSHORE.COM/ELECTRICDREAM](http://WWW.XSHORE.COM/ELECTRICDREAM)





**FOLLOW THE WORLDS  
NUMBER ONE ELECTRICAL BOAT  
COMPANY ON SOCIAL MEDIA!**

Web: [www.xshore.com](http://www.xshore.com) | E-Mail: [info@xshore.com](mailto:info@xshore.com)



X Shore - 100% Electric Boats @XshoreSweden



X Shore - 100% Electric Boats



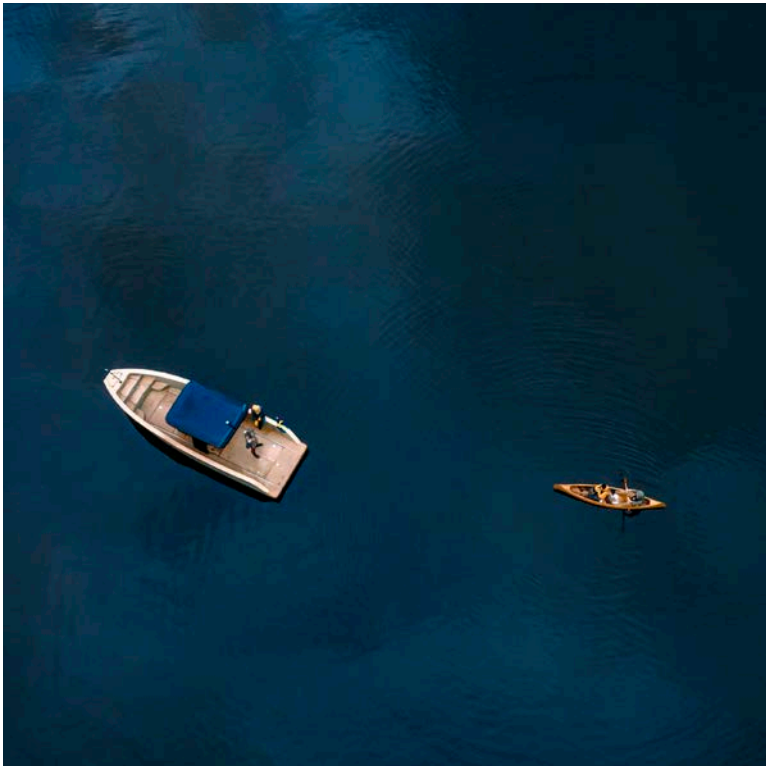
X Shore



@XShoreSweden



x\_shore





X SHORE WORKSHOP  
DRIVING THE FUTURE OF  
ELECTRIC BOATING







## **BOAT ATELIER**

An X Shore boat can be configured in many ways, however for those interested in a truly unique experience, X Shore offers the Boat Atelier Program.

Sit down with X Shore's designers and builders to create the craft of your dreams. From conceptualization, to design and manufacturing, X Shore will assign you a personal assistant that will provide you with unmatched knowledge and expertise from start to finish. All you need to provide is your vision; X Shore will take care of the rest.





**QUESTIONS?**

BOOK YOUR MEETING TODAY AND WRITE TO  
[INFO@XSHORE.COM](mailto:info@xshore.com)



‘THIS HIGH-DESIGN ELECTRIC YACHT AIMS

TO CHANGE BOATING FOREVER’

ARCHITECTURAL DIGEST

